

CORDRY- SWEETWATER CONSERVANCY DISTRICT



Cordry-Sweetwater Conservancy District Newsletter

SPRING 2019

Stacy's Spotlight



By: Stacy
Wethington

Conservancy
Manager

Happy Spring! How are we finally through winter? I know everyone is looking forward to the warm weather and fun times at the lakes. We are preparing for the busy season here at Cordry-Sweetwater, helping new owners, new boats, and soon the

beach and marinas will be open!

The process for developing the budget for calendar year 2020 will soon be upon us as well. Brittany and I will work with the commissions to determine the 2020 budget. You will find an article within this newsletter explaining the budgeting/ tax process.

2019 is not a renew boat decal year, if you purchased your decals (purple/blue) last season, they are good until June 15, 2020. Your purple beach pass is still valid until 2020 as well! Remember you must pre-

sent your physical beach pass to the beach attendant when you use the beach. This helps keep our beach private and for the use of property owners and their guests only.

Our busy season is upon us and my staff and I look forward to seeing you as you come back to the lake for the summer! Our Saturday office hours began on May 4th from 8am to noon. If you have any questions, please feel free to contact me at the District Office. I truly love being your Conservancy Manager.

New Leak Detection Technologies Helping Reduce Water Loss

The CSCD Water Utility has invested in several new pieces of technology to assist in the difficult task of reducing water loss from leaks.

Recently purchased equipment include an acoustic leak-listening device as well as a leak detector from Trimble Water that is a game changer according to Superintendent Josh Hawley.

"Every tool we can arm ourselves with can help battle water loss," says Hawley, "There's no problems fixing leaks when we know they are there; it's the leaks that never surface that are causing the big-

gest headaches."

With the new technology the leak detector listens to the sound of the water in the pipes as opposed to the pipe itself, making it useful on PVC pipe which is the worse type of pipe to find leaks on.

A silver-lining to finding leaks in the system is that Hawley and crew GPS every pipe that they uncover. Soon he will be able to map out the entire water system.

Most residents don't understand the problems that our rocky soils can create for water loss. There can be a leak that never makes it's way to ground level due to it

finding rock channels; making it virtually impossible to find without these new technologies.



A fire hydrant is ready to be used for water leak detection in CSCD pipes.

Visit our website at www.cscd-in.org or join us on Facebook (www.facebook.com/cscdgrounds) or Twitter @cscd_official

BUILDING CORNER



By: Nick Johann

*Building Compliance
Officer*

Spring is here! With that comes the busy construction season. I know people are excited and wanting to get started as quickly as possible on their projects, and I'm here to help. With that said, I want to remind everyone that the building application process is a little longer than what you may be used to if you went to the county for a permit.

Our Building Commission reviews all applications. The Commission meets on the first Tuesday of every month (except January). Applications need to be submitted no less than one week before that meeting. This will give me time to make sure everything is in order and get it out to the Building Commission.

If the project is on land it will be reviewed and considered for approval at the Commission meeting. Projects on land (decks, stairs, hardscapes, and site work) require an application to insure the septic field and lake are protected during the installation. If the project is on Conservancy property (ie over the water), it will move on from the Building Commission to the Board meeting for final approval.

I hope this information is helpful and will aid you in the planning of your project. I can always make myself available to meet with you at your property to discuss future projects if that will be of value to you. Have a wonderful lake season!

Roads Commission Continues Ambitious Road Paving Plans

If everything goes to plan the Roads Commission will have patched and resurfaced over 15 miles of CSCD Roads in just five years without significantly raising the CSCD Budget to do so.

The 2019 Paving bids are out and while it's too soon to tell if we will be able to pave everything we have planned, our three year plan has contingencies built in to make sure we get everything repaired in that time frame.

This year we are focusing on Sweetwater Drive from Centerlake to Duck Drive and also several side drives that are falling apart. Included in this year's plans are: Badger, Grizzly, Grizzly Ct,

Mallard, Lion, and Leopard.

All roads, if any, that put us over budget will be paved next year along with another round of side drives.

The Roads Commission is also making plans to pave a few gravel roads in 2021 or 2022 based on several factors including traffic, slope, cost, drainage, etc. Once finalized, the list will be made available to all freeholders.

We are also planning on putting fresh gravel down on nearly every gravel drive in the District this year. Several road signs are going to be replaced as well as tree trimming, ditch work, and erosion control on several roads.

Sweetwater Spillway Repairs Awaiting Final Design Phase

Engineers have worked for nearly a year to complete the designs for the spillway repairs required on Sweetwater Dam. After multiple geo-technical drills, site visits, site-prep by the CSCD, and deep analysis, our engineers are almost ready to submit it's final design plans to the District.

After our last biennial dam inspection in 2017 revealed major erosion around the spillway area on Sweetwater we have been working closely with engineers to find the most long-term, yet economically efficient way to fix the problems.

The problems stem from the original design of the spillway system. For at least the second time in the life of the spillway the escape pipe has become

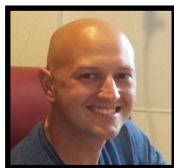
compromised and has caused water to exit the pipe just down from the concrete headwall causing significant damage to that area. (Please note that the dam itself has not, yet, been damaged.)

There are several factors that make this such a difficult situation. The rock layer, construction access, and the steepness of the surrounding banks are just a few of the problems the engineers are trying to figure out.

The CSCD has been proactive in the last two years and have set aside significant funds in the Rainy Day Fund to help cover the projected costs of this repair. Engineers estimates are expected soon and our goal is to bid late 2019.

Please do not park anything on or near your meter. Crews will need access in case of leaks or other emergencies.

Invasive Aquatic Species Closer Than You Think



By: Josh Hawley

Superintendent

Geist Reservoir, Brookville Reservoir, Lake Shafer, and the Ohio River are now on the Indiana DNR list of bodies of water that are confirmed to have Zebra Mussels in the water. The threat is near and it is serious.

The disruptive mussel wreaks havoc on lake eco-systems by eating up

valuable zooplankton and filtering large amounts of water that can allow nasty vegetative growth.

Zebra mussels need to attach themselves to hard surfaces which can include boats, pipes, dock pilings, buoys, and geothermal units. Zebra mussels will also live on the lake bottom and can cause beaches to completely close due to the sharp mussel shells.

According to the fantastically written, and well-informed book, *The Death and Life of the Great Lakes*, the mussels came from Europe aboard sea ships. Once the Great Lakes were connected to the Atlantic Ocean via various canals and channels the mussels quickly invaded. Within two years many of the Great Lakes were ecologically

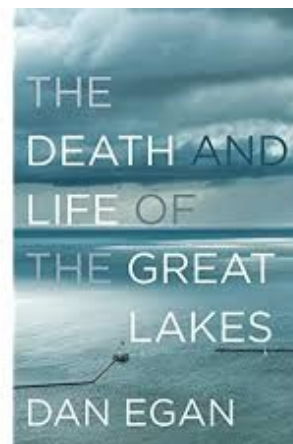
destroyed, causing a huge economical impact as well.

Mussels attach themselves to boats and can be transported via plants, boat bottoms, live wells, bait buckets and anything else on the boat. Once established, it is IMPOSSIBLE to eradicate the zebra mussel.

The fact that the mussels are within 50 miles of the CSCD, we are starting to take several steps to insure we prevent any infestations. The first step is education. With

so many freeholders only here on weekends or in the summer, are those freeholders boating elsewhere in the state? DNR recommends cleaning boats with hot water and allowing it to dry for 5 full days before transporting it to a new lake.

Myself and the Ecology Commission are working on ideas to implement in 2020 that could include boat washing stations, boat check sta-



tions, additional signage, and more.

Ecology Commission member and freeholder Jim Donnellis and his wife, Sue have arranged for three copies of the book *The Death and Life of the Great Lakes* by Dan Egan to be available at the BC Library located here in the Lakes. I would highly recommend this book as it tells the amazing, unbelievable story about the Great Lakes and their battle with invasive species throughout man's time including Zebra mus-

sels.

The Indiana DNR website also has a lot of information regarding the zebra mussels and a current list of lakes that are infected in the state. If you boat on any of these lakes,



Zebra Mussels overcome an empty can in Lake Michigan. An infestation can happen within a year and ruin a lake's fragile ecosystem.

PLEASE contact me (jrhawley1981@gmail.com) so we can help prevent any kind of infestation.

Boating Season Revs into Gear for the Summer

Since 2019 is not a boat sticker year in the CSCD, a review of boating rules is necessary to insure the lakes are enjoyable and, most importantly, safe for everyone.

As the ramps continue to get busier with the anticipation of summer, it's important to remember some basic boating rules. Before you even put your boat on the water, make sure you have your CSCD lot numbers and boating stickers clearly visible on BOTH sides of the craft.

If your boat has been in other waters, please be sure to wash the boat with hot water and let it air dry for at least five days before launching it in one of these lakes to prevent invasive species from entering our waters.

Now that you are ready to launch, make sure you have a sober operator that has a valid driver's license. Please do not power-load or unload your boat on the ramps, it can cause costly repairs to the ramps.

You should also take note of the control lights located at the south end of each lake. A **'RED'** light means the lake is CLOSED to all boat traffic. A **'YELLOW'** light indicates IDLE only time/ conditions. A **'GREEN'** light means the lake is open to normal boating traffic.

As you launch, please insure that you have a life jacket for every person that will be on the boat and at least one throwable device.

Note that traffic on both lakes

should be operating in a COUNTER-CLOCKWISE direction. Do not cut across the lake, go against the flow, or do "donuts" in the lake at any time. This is extremely dangerous.

If you plan on skiing or tubing on the water please insure you know all the rules and safety precautions for each.

As you motor around the lake, take note of the 'No-Wake' buoys. These buoys are marking off EVERY cove in the District and swim areas. Respect your neighbors that are enjoying the calmer waters and idle-only in these areas. Even if a buoy is missing, there are no coves on either lake that aren't idle-only.

Now it's time to enjoy the beautiful, fun lakes you have come to love. Boat patrol is on both lakes during the season to assist boaters and make sure that everyone stays safe. They are not out there to "catch" people breaking the rules, but to try and educate everyone on how to enjoy responsibly. Repeat offenders of breaking the lake rules can lose their lake privileges for up to a year.

It is your responsibility as a lot owner to insure that everyone that might operate your boat on the water knows, and obeys, all the lake rules.

If you have any safety concerns or see someone committing a violation call 812-988-6655 and ask for a CSCD Officer to respond. A full list of the lake rules is available at the office or on our website, www.cscd-in.org.

RULES REVIEW

Top Ten Lake Safety Violations

1. You must follow a counter-clockwise direction during green light hours.
2. You must have a life jacket for each person on board and one throwable device.
3. Yellow light means IDLE-ONLY
4. The max number of people that can be towed behind a boat is TWO.
5. Red light means the lake is CLOSED to ALL boating.
6. Green light means the lakes are open to all boaters in a counter-clockwise direction.
7. It is a violation to have your feet hanging over the boat while the boat is in motion.
8. An orange flag must be used when a person is down in the water.
9. A wake of any kind can not be produced when in a No-Wake zone.
10. If you receive (3) warning tickets within a 365 day period on the lakes ALL of your boat decals may be revoked for up to ONE year.

** If you see something life threatening, call 911

** If you see a boater/swimmer committing a violation call 812-988-6655 and ask for a CSCD Officer to respond.

CSCD SUMMER HOURS

Cordry Marina

Wed & Fri: 4pm-6pm

Saturday: 11am-7pm

**Sun & Holidays:
11am-5pm**

Sweetwater Marina

Wed & Fri: 6pm-8pm

Saturday: 11am-7pm

**Sun & Holidays:
11am-5pm**

CSCD Office

Mon-Fri: 7:30am-4pm

Saturday: 8am-NOON (May 4th-August 24th)

***Office closed
Memorial Day
Weekend**

Summer Hours

Your CSCD Office is bustling with business once again as the summer season gets set to hit. As is the case with every year, the **office will begin SATURDAY hours from 8am-NOON starting on May 4th and ending on August 24th.**

The marinas at both lakes will soon be open for fuel as well. This year, weather depending, the marinas will open the weekend before Memorial Day Weekend and stay open through the weekend after Labor Day Weekend!

If you need a boat measured for stickers, please try and be to the office an hour before closing time. We recommend calling the office ahead of time as well so we can schedule an officer to be here for the measuring.

After-Hours Water Emergency Numbers

In an effort to save money on cell phone expenses there will no longer be a dedicated Emergency On-Call number for water emergencies. We still have an employee on call 24/7/365 for emergencies. Josh Hawley and Josh Bryant, are the employees responsible for those calls. Simply call one of the numbers below and they will take a message and get it to the appropriate on-call person!

317.412.7025

317.306.8395

History Lesson

In 2008 an historic flood ravished and devastated the area. While neither Cordry Dam nor Sweetwater Dam breached, both emergency spillways were activated. Many areas in the CSCD were unreachable due to blown out roads including Cordry Dip and several areas along Sweetwater Drive. East Lake Dam in Prince's Lakes failed, sending a massive flood down Nineveh Road and points downhill flooding the Water Utility's booster pump station. The flood came just days after an F2 Tornado spun its way through the Beech Tree Rd valley destroying 30 homes.



Customers stopping in at the office in 2019 will notice two new additions to the property. A new utility bill drop box was installed this winter that is checked daily by staff. Also a new sign was purchased with remaining 2018 funds.

Leaves are NEVER to be blown into the lakes. Violators can lose lake privileges for 2019!

CSCD Continues to Provide Recreational Opportunities for All



The Centerlake Park Basketball Court was built in 2015 by the CSCD. The goals were donated by Sweetwater Realty. It serves as the cornerstone of Centerlake Park.

When most people think about the recreational opportunities of the CSCD they often only consider the opportunities on the water such as skiing or fishing. But the CSCD offers great fun on the land as well!

The Ecology Commission works with CSCD Manager Stacy Wethington and Superintendent Josh Hawley to develop and maintain the parks and recreational assets of the CSCD.

In the last four years the CSCD has added a full-court Basketball court, Garden Club facility, additional shelter-house at the beach, enhanced sand for the volleyball court, a new swing-set at the beach, a driving range, and a new hiking trail. An endeavor is currently underway to create a wildflower/wildlife area across from Sweetwater Beach!

The lakes and the beach are the obvious park areas, but one spot that has garnered a lot of attention lately is Centerlake Park located on Centerlake Road near the fire station.

This park boasts the basketball court, playground, swings, Garden Club, 1/4 mile walking track, shelter house, hiking trail entrance, Al Taylor Driving Range, and the softball diamond.

Looking for a place to hold your next party or get together? Come into the CSCD office to reserve the new shelter-house at the beach or Centerlake Park. If you are looking to host something indoors, call the CSLOA and rent the Clubhouse!

RULES REVIEW

- Dogs are to be on LEASHES AT ALL TIMES.
- Obstruction of natural or created drainage along roads and drives is prohibited.
- The customer is held liable for any damage and/or cost of replacement to the meter pit, water meter, radio, or any other water utility equipment.
- The customer is REQUIRED to install and maintain a functioning shut-off valve along the service line located between the customer connection and the first water outlet inside the residence.

2019 NEW FISHING LIMITS

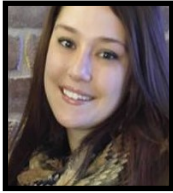
- **Anglers may now keep up to 10 bass per angler per lake per day provided no fish measures between 13" and 16". Of the 10 only 2 may be smallmouth bass and only 1 of the two can exceed 16".**

CSCD COMMISSION MEETING INFORMATION

BUILDING	<i>1st Tuesday</i>	<i>7pm</i>	<i>CSCD Office</i>
ROADS	<i>1st Thursday</i>	<i>5pm</i>	<i>CSCD Office</i>
ECOLOGY	<i>1st Thursday</i>	<i>6pm</i>	<i>CSCD Office</i>
SECURITY	<i>2nd Tuesday</i>	<i>7pm</i>	<i>CSCD Office</i>
WATER	<i>2nd Thursday</i>	<i>5pm</i>	<i>CSCD Office</i>
CSCD BOARD	<i>3rd Tuesday</i>	<i>7pm</i>	<i>Clubhouse</i>

Putting in a tree? Dog Fence? Or doing any other digging? Make sure you call 811 BEFORE YOU DIG!

CSCD Budget, Tax Rates Continue Hot Topic Discussions



By: **Brittany Bay**
Financial Manager

It's that time of year again, Budget Planning. The CSCD has already begun preparation for calendar year 2020. We are working on developing a balanced budget that is both necessary and economical. Maintaining this balance will allow us to protect our current infrastructure while preserving the beautiful lake community for our freeholders to enjoy.

The CSCD Roads, Security, and Ecology commissions work with both the freeholders and CSCD staff in order to propose what needs budgeted for the areas that they oversee. The CSCD Manager (Stacy) and Financial Manager then take the budgets that are proposed and create an estimated budget.

The CSCD Board then goes over the budget to decide what is essential and what is not crucial at this time based on current funds and estimated future funds.

From there the 2020 proposed budget is presented to the Department of Local Government Financing in July. During

the presentation to the DLGF funds are discussed and a tax levy and rate are created to help fund the proposed budget.

The (SA) special assessment tax is collected with your county tax, however deductions that you receive for property taxes are not applied to the SA tax. The tax rate, though, is not just based on the CSCD budget, the assessed property value is used in determining freeholders actual tax dollar amounts.

Once the 2020 proposed budget has been submitted to the DLGF there is a Public Hearing of the proposed budget in September and the 2020 budget is adopted in the Final Adoption Meeting in October; both meetings are open to the public.

The budget has remained about the same over the past few years. The tax rate is the percentage used to determine how much a property taxpayer/freeholder will pay per one hundred dollars of net assessed value. A tax levy is the maximum dollar amount that a taxing unit (CSCD) can raise from property tax dollars that a local government is allowed to collect. Many factors go into the tax levy including cash balances and projected needs.

Recycling Opportunities for CSCD

Brown County Recycling is offering opportunities for CSCD residents to do a little Spring Cleaning!

On Friday, June 14th and Saturday, June 15th a large dumpster will be available for any and all trash (no electronics, tvs, screens). The dumpster will be located at the back-gate right across from the Neighborhood Church of God on Sweetwater Trail.

From now until June 28th CSCD residents can drop off any tires to the office during regular business hours. Most tires are free, but there is a fee for rims.

For any and all recycling questions, including the recycling bins located at the CSCD Office, please call Brown County Recycling at 812.988.0140. Happy Spring Cleaning!

CSCD BUDGET FACTS

- ◆ The 2019 Budget was \$72,947 LESS than 2018, making it the smallest budget since 2012.
- ◆ The 2019 Tax Rate of 53.52 cents per \$100 Assessed value was the highest tax rate given to us by the DLGF since 2014.
- ◆ Transfers of budget excess to the CSCD Rainy Day Fund (capped at 10% of the annual budget) each year for the last 5 years = \$400,000. These funds will help cover Sweetwater Dam Repairs.
- ◆ Transfers to the Rainy Day Fund as well as any budgeted funds from any given year are NOT used to calculate the Tax Levy.
- ◆ The tax levy is calculated and a rate is determined by the DLGF. The rate equation is the CSCD levy/ the total net assessed value of all the properties in the District.

CSCD OFFICE

CLOSURES

May 27th: Memorial Day

July 4th: Independence Day

September 2nd: Labor Day

CSCD Social Media

Facebook: www.facebook.com/cscdgrounds

Twitter: @cscd_official

Instagram: @cscdworks

YouTube: Cordry-Sweetwater Conservancy District

Pay your water bill and/or sign up for free text alerts at our website www.cscd-in.org

Your CSCD Employees

Stacy Wethington, Conservancy Manager
Brittany Bay, Financial Manager
Nick Johann, Building Compliance Officer
Judy Surface, Water Clerk
Mary Johantgen, Part-time, Year-round Office Clerk

Josh Hawley, Water/Grounds Superintendent
Josh Bryant, Water/Grounds Assistant Superintendent

Mike Roberts, Part-time, Year-round Water/Grounds Maintenance

Bernie McGaha, Chief Deputy
Jimmy Green, Deputy
Mike Clark, Deputy

There are about a dozen part-time/ seasonal employees without whom the District would not operate as smoothly as it does. Thank-you!

**Cordry Sweetwater Conservancy District
8377 Cordry Drive
Nineveh, IN 46164**

Contact Us

**Cordry-Sweetwater
Conservancy District
8377 Cordry Drive
Nineveh, IN 46164**

(317) 933-2893

cscdinformation@gmail.com

**Visit us on the web at
www.cscd-in.org**

**Like us on Facebook.
www.facebook.com/cscdgrounds**

**Follow us on Twitter
[@cscd_official](https://twitter.com/cscd_official)**

**Follow us on Instagram
[@cscdworks](https://www.instagram.com/cscdworks)**

**First Class
U.S. Postage Paid
NINEVEH, IN
Permit No. 22**